

HARDWICK PARISH COUNCIL

**I hereby give notice that as previously arranged, the Meeting of the Parish Council will be held on
Tuesday 28 January 2020 in the School at 7.00 pm**

The Public and Press are cordially invited to be present. The order of business may be varied.

All members of the Council are hereby summoned to attend for the purpose of considering and resolving upon the business to be transacted at the meeting as set out below.



Mrs Gail Stoehr, Clerk 21/01/20

AGENDA

Open Public Session including reports from the County & District Councillors

- 1 To approve apologies for absence**
- 2 Declarations of interest**
 - 2.1 To receive declarations of interests from Cllrs on items on the agenda and details of dispensations held
 - 2.2 To receive written requests for dispensation and grant any as appropriate for items on this agenda
- 3 To approve the minutes of the last meetings on 26 November and 21 January**
- 4 Matters arising and carried forward from the last or previous meetings for discussion/decision**
 - 4.1 (4.2) To consider in the light of the Village Plan, what views the Council might wish to put forward as important for the village in the next local plan
 - 4.2 (4.3) Tree planting update and correspondence received
 - 4.3 (4.5) LHI Traffic calming – to consider responses to consultation and any action required
 - 4.4 (5.1) Resident request for a dropped kerb – to consider further correspondence from CCC and the resident
 - 4.5 (5.3) Operation London Bridge – update on Working Group
 - 4.6 (7.3) Parish Paths maintenance – to consider quotations if received and update on site visit with CCC
 - 4.7 (8.2) Egremont Road play repairs – to consider recommendations and quotations
 - 4.8 (July meeting) Request for Speedwatch signage – to consider quote and how this is to be funded
- 5 To consider any correspondence/communications received requiring a decision of the Council**
 - 5.1 Hardwick School proposal to erect statue on land in front of the School on the corner of Limes Road
 - 5.2 Cricket Club request for reduced fees
 - 5.3 SCDC – offer of 3 free trees
 - 5.4 St Mary's PCC Community Hall Working Party – request to run drainage pipe under Parish Council owned land
 - 5.5 Resident – Facility booking system for Hardwick
 - 5.6 SCDC items referred to Planning Committee and correspondence received
 - 5.7 CCC – Draft Climate Change and Environmental Strategy consultation
 - 5.8 Greater Cambridge Partnership Local Plan Issues and Options consultation
- 6 To consider any planning applications and decision notices and tree works applications ***
 - 6.1 Planning applications
 - 6.1.1 S/4309/19/FL – 301 St Neots Road – First floor loft conversion including raising of roof level
 - 6.1.2 S/4388/19/DC – Land East of Highfields Road, Highfields Caldecote – Discharge of conditions 8 (Ecology enhancement) and 10 (Badger sett) pursuant to planning appeal APP/W0530/W/16/3149854 (S/2510/15/OL)
 - 6.1.3 S/4074/19/DC – Land opposite 97 to 127 Highfields Road, Highfields Caldecote – Discharge of conditions 2 (External materials), 4 (Landscape and ecological management plan (LEMP) and 9 (Scheme to retain and improve the hedgerow) pursuant to planning permission S/4619/18/RM
 - 6.2 SCDC and appeal decision notices - to note
 - 6.3 Tree works applications
 - 6.3.1 S/10017/20/TC – 44 Main Street
- 7 Members reports and items for information only unless otherwise stated**
 - 7.1 New Housing Developments and Planning Obligations ^(SR)

* NB Some planning and tree works applications may not be specifically listed on this agenda but may still be considered by the Parish Council due to the time constraints of making a recommendation to the District Council. For more information see the current planning application consultations on <http://plan.scambs.gov.uk/swiftlg/apas/run/wchvarylogin.display>

Hardwick Parish Council meets on the fourth Tuesday in each month except December when the meeting is on the third Tuesday. Meetings are held in the School but occasionally, when the School is closed they are held in the Pavilion. Please check the notice board for the venue which is shown on the agenda for each meeting.

- 7.1.1 To consider offer of maintenance funds for Grace Crescent Public Open Space
- 7.2 Village Plan report and to consider any actions
- 7.3 Proposal that the Parish Council pays CCC the costs of attaching the MVAS to street light columns ^(PJ)
- 7.4 Proposal that the Council pay for CCC to supply and install 3 posts at £200 each for MVAS in the village, sites have been agreed/approved by Highways. 2 x St Neots Rd, 1 x Kesters
- 7.5 Proposal that the Council considers Facebook complaints ref North/South Hardwick village pathway improvements work by CCC confirm planned to commence end February. Neighbouring residents will be informed by letter^(PJ)

8. Finance, risk assessment and procedural matters

- 8.1 To consider any quotes for urgent work required because of risk and the Clerk's use of delegated powers
- 8.2 To receive play areas and skate park inspection reports and consider if any work is required
- 8.3 To receive the financial report and approve the payment of bills
- 8.4 To consider quotations for Internal Audit FY2020

9. Closure of meeting and items for the next agenda

* NB Some planning and tree works applications may not be specifically listed on this agenda but may still be considered by the Parish Council due to the time constraints of making a recommendation to the District Council. For more information see the current planning application consultations on <http://plan.scambs.gov.uk/swiftlg/apas/run/wchvarylogin.display>

Hardwick Parish Council meets on the fourth Tuesday in each month except December when the meeting is on the third Tuesday. Meetings are held in the School but occasionally, when the School is closed they are held in the Pavilion. Please check the notice board for the venue which is shown on the agenda for each meeting.

Mrs Gail Stoehr, Clerk to Hardwick Parish Council, 30 West Drive, Highfields Caldecote, Cambridge, CB23 7NY
Tel: 01954 210241 Email: hardwickpc@lgs-services.co.uk

Open Public Session including reports from the County & District Councillors

1. Apologies for absence – to be reported at the meeting.
2. Declarations of interests – members should declare their interests state why they have an interest, the type of interest held and if they have a dispensation state this and the extent of their dispensation i.e. to either speak or speak and vote. If members have a pecuniary interest, having declared an interest they must not take part in the agenda item unless they have been granted a dispensation to do so.
3. To approve the minutes of the last meetings on 26 November 2019 and 21 January 2020 (attached)
4. Matters arising and carried forward from the last or a previous meeting for discussion/decision
- 4.1 (4.2) To consider in the light of the Village Plan, what views the Council might wish to put forward as important for the village in the next local plan
Deferred at the last meeting.
- 4.2 (4.3) Tree planting update and correspondence received
The Parish Council's order of Small Copse (30 saplings) will be delivered between 28th Feb and 13th March to the Chairman.

Pat Portlock has written:

“Myself and two others walked the village this morning and assessed the 16 areas owned by Hardwick Parish Council. At present there are 93 trees growing in these areas and we thought there is room for another 112 trees (depending on which species are supplied).

One area had three manhole covers and feel this area should be assessed again re the drains.

We did not assess the areas between Sudeley Grove and Ashmead drive as we know the area is being monitored.

Re grass cutting: which areas have the grass cut and would this need to be taken into consideration re the position and number of the trees?”

- 4.3 (4.5) LHI Traffic calming – to consider responses to consultation
Cllr Croft to report.

The following has been received from the School:

“I am writing to you to show our support for the Hardwick Community Speed Watch group operating in Hardwick village. As a Head teacher, I consider the safety of our children as paramount. Some of the information we have received from the Speed Watch group is rather alarming, specifically the number of cars ignoring the 20mph speed limit placed on the stretch of road outside school, during school hours. I also know this is not just an issue the school feel strongly about, but the wider village community.

In school we teach our children road awareness and road safety. We have also begun to add sections to our newsletters to raise road safety issues and remind all parents of the speed limits that are in place in the village. This is, of course, only talking the issue from one angle. I know the Speed Watch group put in a lot of time and effort and their hard work is helping greatly. I simply ask the Parish Council to do what they can to support the traffic calming initiatives and make the village a safer place for all.”

Kind regards,

James Hoban

Co-Head teacher”

- 4.4 (5.1) Resident request for a dropped kerb – to consider CCC response

CCC have written in response to the enquiry about the specification and costs of a dropped kerb:

“A pedestrian dropped kerb is usually 4 kerbs long with two dropped kerbs in the middle and a tapered kerb on each side. Each kerb is 900mm long so the length of the area will be just over 3.5m. If you want me to supply the parish with a quote for our contractors (Skanska) to install one or a pair (one on either side of the road) then please complete a PFHI form available on our website here (<https://www.cambridgeshire.gov.uk/residents/travel-roads-and-parking/roads-and->

[pathways/improving-the-local-highway](#)). You will also need to provide a location plan and photos of the location would help.”

This would involve an up front payment of £500 for the PFHI before an indication of costs could be obtained.

The resident has provided the following additional information and may attend the meeting.

“Having gone along Limes Road there is one near the skate park, but it’s quite narrow and not directly opposite another dropped kerb. Would there be any chance to have one opposite 54 Limes Road. This will give clear access along the path, further down there are bushes hanging over which would interfere with access.

If this hasn’t been dealt with at the current meeting, I will come along to the next to explain.”

4.5 (5.3) Operation London Bridge – update on Working Group

The Chairman to report.

4.6 (7.3) Parish Paths Maintenance – to consider quotations if received and update on site visit with CCC
Cllr Joslin to report. Quotations will be brought to the meeting if received.

4.7 (8.2) Egremont Road play repairs – to consider recommendations and quotations
Quotations will be brought to the meeting.

4.8 (July meeting) Request for Speedwatch signage – to consider quotation and how this is to be funded
CCC write:

“I have received a estimate back from the contractor for £350.93 to install three three speedwatch signs at the locations previously specified. Please advise if the parish is happy to pay this and I will order the works.

Given that I get estimates for signage works, I would hope/expect that the cost would actually be less than this but I need you to agree to £350.93 just in case I’m charged that much.”

The minutes of the July meeting record:

“4.11 (7.3) Speedwatch signage – to consider quotation and how this is to be funded

RESOLVED that Cllr Joslin should submit an application for three signs to be erected at the entrances to the village at a cost of £88.00 each. Cllr Joslin will provide the required photos.”

Other to note:

(4.1) Time banking

With regard to the query raised at the last meeting, under S137 parish councils have the power to contribute to charitable groups and organisations, provided there is a benefit to Hardwick and that the contribution is proportionate to the direct parish benefit to Hardwick.

(5.2) Hardwick Mothers and Toddlers – request for financial support

Hardwick Mothers and Toddlers have said they are currently reassessing their needs and have withdrawn their request for funding, but will advise if they wish to reapply.

5. To consider any correspondence/communications received

5.1 Hardwick School Proposal to erect a sculpture on land in front of the School on the corner of Limes Road

“I am a Year 3/4 teacher at Hardwick & Cambourne Primary School, at the Hardwick site. I was wondering if you'd be able to contact me, as I've managed to secure an amazing statue from Tony Hillier's collection, that is currently shown in his garden in Histon. You might have seen his work, as several primary schools and public buildings around Cambs have them, and I've always been keen to have one at school. He sadly passed away a few years ago, and his wife is wanting to move some of his work into new public places, for others to enjoy. We are getting 2 smaller ones for our school sites, but would love to put this large sculpture on the land just outside our school gates, for all of Hardwick to enjoy. I've attached a picture of the sculpture. “I am a teacher at Hardwick and Cambourne Primary School, Hardwick Site. I have been offered, free of charge, 3 sculptures from the late Tony Hillier's collection. His sculptures are all around Cambs, in other schools, villages and public locations, and this is a wonderful opportunity to obtain some for our school / village.”

The Land Registry shows the land as being registered as Hardwick Primary School with a strip around the edge being County Council Highway verge. The School has been advised that they should

contact SCDC to see if planning permission is required and CCC regarding visibility splays. CCC has responded that it has no objection as the proposal is on land owned by the School.

The School is seeking the views of the Parish Council.

5.2 Cricket Club request for reduced fees

Chris Fuller writes:

“The cricket club only used the cricket square for three matches this year due to the club losing more members with just two remaining from the village. We have now decided to close the facility at Hardwick apart from the cricket nets and gradually transport all movable items to the other ground. This is because it has become too much to maintain both grounds with only one adult team running. Yes there are still juniors playing but the numbers are small and the income does not support two grounds.

This is quite a sad situation for me as I have been involved with the club since its reincarnation in the early 90s. But it is clear that there is not the local support (players) that made the club so successful in the early years. I would therefore ask if the parish council would consider a reduction in the current invoice to reflect the number of games played on the ground.

Please note that I am happy to keep a watchful eye on any groundworks that are required on the recreation ground in the future to ensure that the surface is good for all users and not just the sports groups.

May be in the future the cricket club will return, but at present the numbers in the sport do not reflect that view as all sports seem to be suffering a fall in numbers year on year.

My thanks to the parish council for all their support over the years as this has helped the club tremendously.”

5.3 SCDC – offer of 3 free trees

“To encourage the planting of trees and to promote the many benefits, the Council is offering every Parish in the district a voucher for £60 to cover the cost of three small trees, in exchange for an undertaking to plant the trees on parish council land.

If you would like to find out more and apply for your voucher, please visit our webpage:

<https://www.scambs.gov.uk/three-free-trees>

Please note the deadline for applying for your voucher is 14th March 2020 and the garden centres will only accept the vouchers until 31st March 2020.”

5.4 St Mary's PCC Community Hall working party – request to run drainage pipe under Parish Council owned land

Attached.

5.5 Resident – Facility booking system for Hardwick

“The building work at St Mary's Church for the Community Hall commences tomorrow. (12 January). In preparation for its completion in the summer we are investigating a room booking system which we would like the Parish Council to be aware of.”

5.6 SCDC items referred to Planning Committee and correspondence received

Following receipt of a letter to parish councils from a community action group, Few's Lane Consortium Ltd, based in Longstanton, raising awareness of the District Council's review, the following response has been received from the Leader of South Cambridgeshire District Council:

“Dear Parish Clerk/Parish Meeting Chairman,

We've been contacted by a number of people expressing concerns about possible changes to how we decide which applications are referred to planning committee following a request from a parish council.

What I would like to stress to parish councils is that, in practice, the process for determining which applications go before planning committee would remain the same as they are now. At the moment the Chairman and Vice Chairman of Planning Committee meet with a planning manager every week and consider requests for referral to planning committee.

I have spoken to the Chairman of the committee and he has reassured me that since taking on the role in May 2018 there has not been a situation where agreement has not been reached. Once the Chairman and officer jointly conclude their deliberations a record is signed by the Chairman and officer confirming the outcome.

As you may be aware, we are looking to change the wording of our constitution in this area. We think this is really important as we were recently challenged on how it could be interpreted. I understand your concerns and the need for reassurance that elected members will continue to play a similar role as they do now.

To try and give you some reassurance, I am going to recommend that in the unlikely event there is a disagreement between the Chairman of Planning Committee and the Joint Director of Planning and Economic Development on any application, it is automatically referred to Planning Committee for it to be considered and determined.

I am sorry that you did not hear about these proposed changes from us directly and I hope my letter reassures you.

The constitution review task and finish group will consider this matter in February and subject to their views, I would anticipate it will be referred to planning committee shortly after to make the change. If you still have any questions or concerns please talk to your District Councillor so they can feed this into the review, or contact me directly.

Finally, just to reassure you that the practice of this Council will remain unchanged.”

Cllr Bridget Smith, The Leader, South Cambridgeshire District Council

5.7 CCC Draft Climate Change and Environmental Strategy consultation

“Cambridgeshire County Council will be running a public consultation on our draft *Climate Change and Environment Strategy* from 20 December 2019 to 31 January 2020. We are keen to hear the views of our Parish Council’s on the Strategy, and to understand where you may be able to support us in our vision for a Net Zero Cambridgeshire.

Please find attached a letter with further details

Emily Bolton

Energy Projects Officer

ENERGY INVESTMENT UNIT”

5.8 Greater Cambridge Partnership Local Plan Issues and Options consultation

“It is a very exciting time for Cambridge City and South Cambridgeshire District Councils, as we are preparing a new joint Local Plan which will affect the future of Greater Cambridge over the next 20 years.

The Councils are carrying out a public consultation called: Greater Cambridge Local Plan – The First Conversation: Issues and Options 2020. This consultation is the start of the conversation about the kind of place we want Greater Cambridge to be in the future. It explores the ‘big themes’ – including climate change, biodiversity and social inclusion – that will influence how homes, jobs and infrastructure are planned, and where growth might go.

You have received this email because you are a Parish Council.

Our consultation runs between 9am on 13 January and 5pm on 24 February 2020. Details of where you can view the consultation documents and how to submit comments can be found in the enclosed public notice.

You can explore all the consultation material and give us your comments on our website:

www.greatercambridgeplanning.org

During the consultation period, we will be taking a ‘roadshow’ to places around the area including shopping centres, schools, and community centres. A complete list of events can be found on our website and is included at the end of this email for convenience.

We will also be holding a ‘Big Debate’ on the evening of 18 February, where we are inviting local groups to share their ideas about what should be in the Local Plan, in a fun, provocative and lively public event. If you are interested in being one of the groups to present, or would like to be a member of the audience, please visit the Big Debate [booking link](#) by 20th January.

If you would like further information or have any questions please contact us by emailing localplan@greatercambridgeplanning.org or calling 01954 713183.

Yours faithfully

Stephen Kelly

Joint Director for Planning and Economic Development for Cambridge and South Cambridgeshire”

6.1 Planning applications

NB Some planning applications may not be specifically listed on this agenda but may still be considered by the Parish Council due to the time constraints of making a recommendation to the District Council. For more information see the current planning application consultations on <http://plan.scambs.gov.uk/swiftlg/apas/run/wchvarylogin.display>

- 6.1.1 S/4309/19/FL – 301 St Neots Road – First floor loft conversion including raising of roof level
- 6.1.2 S/4388/19/DC – Land East of Highfields Road, Highfields Caldecote – Discharge of conditions 8 (Ecology enhancement) and 10 (Badger sett) pursuant to planning appeal APP/W0530/W/16/3149854 (S/2510/15/OL)
- 6.1.3 S/4074/19/DC – Land opposite 97 to 127 Highfields Road, Highfields Caldecote – Discharge of conditions 2 (External materials), 4 (Landscape and ecological management plan (LEMP) and 9 (Scheme to retain and improve the hedgerow) pursuant to planning permission S/4619/18/RM

6.2 SCDC and appeal decision notices - to note

- 6.2.1 S/3879/19/LD – 4-6 East Drive, Highfields Caldecote – Certificate of lawful development for an existing use of the land to the rear of 4-6 East Drive as a private amenity area in domestic use – Permission granted.
- 6.2.2 S/3541/19/FL – 45 Meridian Close – Single storey rear, side and front extension – Permission granted.
- 6.2.3 S/3296/19/FL – 121 Limes Road – Single storey rear extension, single storey front and side extension, garage conversion – Permission granted.
- 6.2.4 S/2367/19/VC – Agricultural field west of Grace Crescent – Variation of condition 2 (Hard and soft landscaping) of S/2107/19/VC (Variation of condition 2 (Materials) of planning permission S/4551/17/RM (Application for approval of reserved matters for layout, scale, appearance and landscaping (not EIA) for the erection of up to 98 dwellings and associated works following outline planning permission S/1694/16/OL – Permission refused.

6.3 Tree works applications

Tree works applications may now be viewed on the SCDC Planning Portal. NB Some tree works applications may not be specifically listed on this agenda but may still be considered by the Parish Council due to the time constraints of making a recommendation to the District Council. For more information see the current tree works application consultations on <http://plan.scambs.gov.uk/swiftlg/apas/run/wchvarylogin.display>

- 6.3.1 S/10017/20/TC – 44 Main Street

7. Members' reports and items for information only unless otherwise stated

- 7.1 New Housing Developments and Planning Obligations including St Neots Road development update
Cllr Rose to report.

- 7.1.1 To consider offer of maintenance funds for Grace Crescent Public Open Space

Hill have written:

“As the scheme progresses I will be dealing with the contributions side of the S.106 going forward and as part of that wanted to inform you that we will be in touch within the next couple of weeks to discuss an appropriate figure for the maintenance of the open space at our site.

The Clerk replied:

“My understanding is that the Parish Council has agreed in principle to taking over the POS areas subject to an agreement being reached on the amount (as attached). The Parish Council will be seeking guidance from James Fisher S106 Officer at South Cambs District Council (SCDC) once you have made the offer.

Once this has been reached you need to inform SCDC and pay over the money to SCDC who then pay the funds over to the Parish Council.”

Hill have written back as follows:

“I have since calculated the value for the maintenance of the open space as agreed in the drawing attached for Grace's Crescent, Hardwick. We have calculated the figure by measuring the areas of associated open space as agreed on the drawing. I have provided a breakdown of the costs in the excel table below.

	Rate	Area/ No.	Annual Cost	10 Years
Grassland/ Open space	£ 0.31	4,435.5	£ 1,390	£ 13,896
Hedge	£ 4.92	279.7	£ 1,376	£ 13,761
Trees	£ 12.00	67.0	£ 804	£ 8,040
Benches	£ 50.00	5.0	£ 250	£ 2,500
Footpaths	£ 0.18	594.2	£ 107	£ 1,070
Play area	£ 588.63	3.0	£ 1,766	£ 17,659
Total				£ 56,926

Hopefully you find the figures appropriate and we can agree on the totalled sum.”

Map attached.

7.2 Village Plan report and to consider any actions

7.3 Proposal that the Parish Council pays CCC the costs of attaching the MVAS to street light columns
(PJ)

Cllr Joslin writes:

“Please see attached details of the post that are to be installed in the village by CCC on which we are intending to fix the MVAS. There will be a charge, also an annual charge I assume. I assume that you are familiar with the procedure as your other parishes have moveable MVAS units. HPC need to confirm that the cost will be paid to CCC and this is why I now request it to be an agenda item.”

CCC Street Lighting Attachments Policy attached.

7.4 Proposal that the Council pay for CCC to supply and install 3 posts at £200 each for MVAS in the village, sites have been agreed/approved by Highways. 2 x St Neots Rd, 1 x Kesters^(PJ)

7.5 Proposal that the Council considers Facebook complaints ref North/South Hardwick village pathway improvements work by CCC confirm planned to commence end February. Neighbouring residents will be informed by letter^(PJ)

8. Finance and risk assessment and procedural matters

8.1 To consider any quotes for urgent work required because of risk and Clerk’s use of delegated powers

The Clerk used her delegated powers for:

- £6 for title of land outside school gates to check if was the Parish Council’s (owned by school)
- to place an order with Eastern Tree Surgery for £1250 plus VAT for the arboricultural report, being the cheapest of the three quotes received.

8.2 To receive play areas and skate park inspection reports and to consider if any work is required

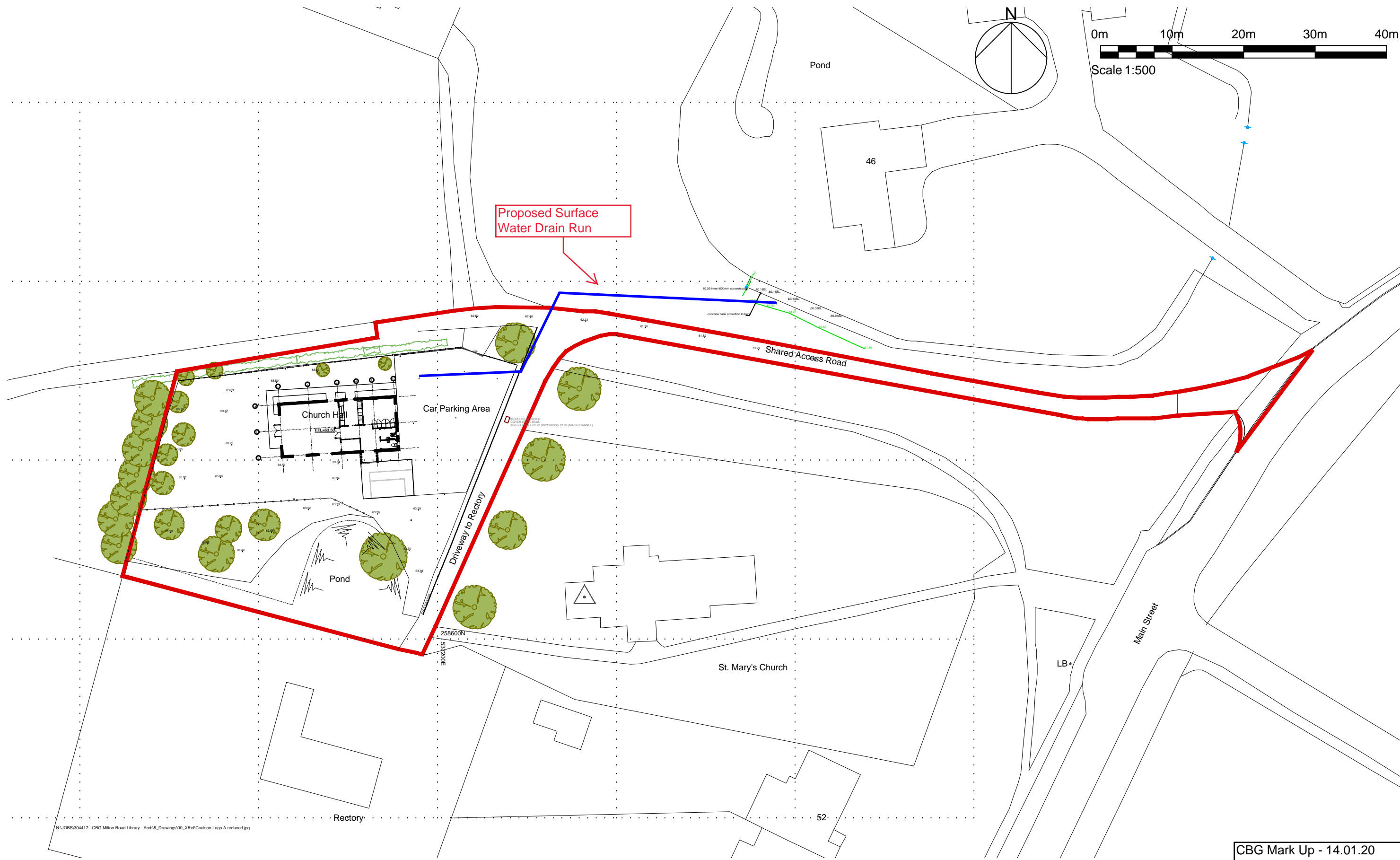
8.3 To receive the financial report and approve the payment of bills

8.4 To consider quotations for Internal Audit FY2020

Quotations have been received which range between £160 and £800 and these will be brought to the meeting.

9. Closure of Meeting and items for the next agenda





Ingleton Wood LLP shall have no liability to the Employer arising out of any unauthorized modification or amendment to, or any transmission, copy or use of the material, or any proprietary work contained therein, by the Employer, Other Project Team Member, or any other third party.

All dimensions are to be checked and verified on-site by the Main Contractor prior to commencement; any discrepancies are to be reported to the Contract Administrator.

This drawing is to be read in conjunction with all other relevant drawings and specifications

Do Not Scale

© Ingleton Wood LLP

C2	Topo Survey Added	13/01/20	DF	DF
C1	Construction Issue	06/01/19	JK	DF
P2	Contractor's comments incorporated. Issued for information.	15/10/19	BM	DF
P1	First Issue	27/04/18	DF	DF
Rev	Description	Date	Chk	Apr
Project No: 304526		Scale @ A3: 1:500		Drawn By: HG

Project:
New Church Hall
St Mary's Church
Hardwick
Cambridge

Client:
Coulson Building Group

Title:
Proposed Block Plan

Drawing Number:
304526 - IW - XX - XX - DR - A - 3102

Status: S2 Purpose of Issue: Construction Revision: C2

Ingleton Wood

Property and Construction Consultants
Issuing office: Norwich
T: 01603 666847
www.ingletonwood.co.uk

Vision, form and function

My ref: CCES 2019/20 – Parish Councils

Date: 22/11/2019

Contact: Sheryl French

Telephone: 01223 728552

E Mail: sheryl.french@cambridgeshire.gov.uk



Place and Economy
Environment and Commercial
Box No SH1315
Shire Hall
Castle Hill
Cambridge
CB3 0AP

Dear Parish Clerk,

Cambridgeshire County Council declared a Climate and Environment Emergency in May 2019. As part of this declaration the Council is developing a *Climate Change and Environment Strategy and Action Plan*. The *Strategy* outlines how we will: reduce the carbon footprint of the Council and the County; help our communities adapt to the change already happening; and enhance nature and the benefits it provides.

As part of the *Strategy* development, the County Council is keen to understand what our Parish Councils and their communities think of the targets and actions we have set ourselves and how you can work with us to bring forward some of the changes that are needed to the way we live and work. We will shortly be launching a consultation on the draft *Strategy and Action Plan*, and we would like to invite you to review it and provide feedback. You as a Council may also have declared a Climate Emergency and we would be interested to hear what actions you have taken since then and how we as a body could aid you.

The consultation will be available online from 20 December 2019 to 31 January 2020, where you will find a copy of the *Strategy* documents and our questionnaire, through which you can provide feedback. The consultation will be hosted on ConsultCambs website:

<https://consultcambs.uk.engagementhq.com/climate-strategy>

You may wish to add this matter onto the agenda for discussion at your January meeting, in order to ensure that you are able to respond within the consultation timeframe. Should you wish for a member of the Climate Change and Environment Strategy project team to attend your meeting, please let me know as soon as possible, so that this can be arranged.

Your responses will be highly valuable to us and will ensure that the *Strategy* meets the needs of our communities as well as the Council. If you have any questions, please do not hesitate to get in touch.

Yours sincerely,

A handwritten signature in black ink, appearing to read 'Gillian Beasley', is written in a cursive style.

Climate Change and Environment Strategy Consultation

Consult Cambridgeshire

Please return to: mlei@cambridgeshire.gov.uk by 31 January 2020

Since declaring a Climate and Environment Emergency, cross-party and cross departmental working groups in the council have been bringing together evidence from internal and external sources on which to build the Council's strategy and action plan. We have worked to build a strategy that we want to be both ambitious and achievable, that will create a pathway for the Council and its collaborations with partners and Cambridgeshire communities to reach net-zero carbon by 2050. We have identified priority areas to focus our efforts in the Council as well as those areas that we need to work in partnership plus targets to measure success and actions to get us there.

This is where we need you – to help us shape and develop our targets and actions to best reflect the ambition of Cambridgeshire communities, and not just the council.

The survey will take about 10 minutes to complete.

Are you answering as:

(Choose any one option) (Required)

☐ an individual?

☐ an organisation?

What is the name of your organisation?

(Required)

What type of organisation are you?

(Choose any one option) (Required)

☐ School

☐ City or District Council

☐ Town or Parish Council

☐ Business

☐ Charity

☐ Other (please specify)

Contact Details: Name

(Required)

Contact details: email

(Required)

Contact details: phone number

(Required)

Climate Change and Environment Strategy Consultation

Consult Cambridgeshire

Please return to: mlei@cambridgeshire.gov.uk by 31 January 2020

Our priorities

Across the strategy and action plan there are a number of priority areas outlined. These describe the Council's ambition and key areas on which we intend to focus. These are broken down into three sections: mitigation, adaptation and natural capital.

1. **Mitigation** – These are the areas we will focus on to reduce greenhouse gas emissions
2. **Adaptation** – These are the areas we think we can change to build the County's resilience to the effects of climate change. Eg. Actions to prevent flooding
3. **Natural Capital** – These are the areas where we want to improve and increase the amount and quality of green space in Cambridgeshire and reduce air and plastic pollution

How important do you think it is to implement each of the Council's priority areas for MITIGATION? (section 3.3) (tick one)

(Required)

Questions	Not at all important	Not	Quite important	Very important	Don't Know
		particularly important			
NEARLY ZERO ENERGY BUILDINGS - Improve the energy efficiency of all Council owned buildings, build new buildings to higher policy standards and install (where possible) renewable heating in place of gas or oil					
TRANSPORT - Manage the local highway network to prioritise walking, cycling and public transport, install electric vehicle infrastructure					
WASTE MANAGEMENT - Increase carbon saving targets for waste treatment, review opportunities to reduce carbon emissions from transporting waste materials, improve carbon capture from closed-landfill sites.					
AFFORESTATION AND LAND USE - Plant woodlands on county land, develop energy projects to help provide carbon-free heat and power for the County					

Climate Change and Environment Strategy Consultation

Consult Cambridgeshire

Please return to: mlei@cambridgeshire.gov.uk by 31 January 2020

How important do you think it is to implement each of the Council's priority areas for ADAPTATION? (section 4.5) (tick one)

(Required)

Questions	Not at all important	Not particularly important	Quite important	Very important	Don't Know
CLIMATE CHANGE RISK STRATEGIES - Develop approaches to ensure all statutory and discretionary Council services are prepared for the impacts of climate change, minimising service disruption					
THE COUNCIL'S ASSETS - To make our buildings and land holdings resilient to the impacts of climate change, supporting staff to work effectively and to ensure continuity of service					
FLOOD RISK - Utilise innovative approaches to prevent the risk of flooding from increasing with unpredictable weather events and sea-level rise. - Increase carbon saving					
HIGHWAYS MANAGEMENT - Explore the use of new materials and technologies to enhance the resilience of our roads, develop new approaches to road maintenance that provide benefits for users					
IMPACTS ON VULNERABLE PEOPLE - Impacts of severe weather on vulnerable people will be managed through our Public Health, Social Care and Emergency Planning recovery functions, including care homes					

How important do you think it is to implement each of the Council's priority areas for NATURAL CAPITAL? (section 5.5) (tick one)

(Required)

Questions	Not at all important	Not particularly important	Quite important	Very important	Don't Know
HABITAT RESTORATION - enhance our minerals and waste planning policy to ensure restoration proposals reflect local and strategic objectives for countryside enhancement					
LAND MANAGEMENT FOR NATURE - Shift our land and asset management approach to place greater emphasis on positive environmental outcomes					
BIOSECURITY - Shifting to a more pro-active approach to identification of disease or invasive species across our estate, ensuring tenant farmers are able to react speedily should a disease or invasive be identified on County land					
Engagement with tenant farmers - Provide support through rapidly shifting governmental policy and regulation governing agriculture in the UK					
Reducing plastic pollution - Improve how the Council procures its goods and services to minimise single-use plastic and work with our supply chain to find more sustainable alternatives					

Climate Change and Environment Strategy Consultation

Consult Cambridgeshire

Please return to: mlei@cambridgeshire.gov.uk by 31 January 2020

Do you have any comments on our priority areas?

Our priorities for Collaboration with Partners, Business and the Community

The Council works with many different partners to deliver services. The Council will collaborate with our partners to improve the environment and reduce Cambridgeshire's carbon footprint. The Strategy and action plan includes priority areas for these collaborations to focus on.

As before, these are broken down into three sections: mitigation, adaptation and natural capital.

How important do you think it is to implement each of our collaborative priority areas for MITIGATION?
(tick one)

(Required)

Questions	Not at all important	Not particularly important	Quite important	Very important	Don't Know
PEATLAND - Working with the scientific community, local conservation organisations and agri-tech businesses to trial innovative projects to restore the carbon sequestration capacity of peatlands					
decarbonisation of buildings and operations, whilst actively looking for opportunities to commercialise and export products					
TRANSPORT - Working with the Combined Authority, we will collaborate on the development of the Local Transport Plans to prioritise public and mass transport solutions and active travel that reduce CO2 emissions. Using our highways network, transport and building assets, the County will need to work with local partners to help deliver coherent County-wide electric-vehicle (EV) infrastructure, and provide sites for EV charging facilities					
DOMESTIC BUILDINGS - Working with District and City Councils and the Combined Authority to develop non-statutory spatial plans that bring forward zero carbon growth across Cambridgeshire					

Climate Change and Environment Strategy Consultation

Consult Cambridgeshire

Please return to: mlei@cambridgeshire.gov.uk by 31 January 2020

How important do you think it is to implement each of our collaborative priority areas for ADAPTATION?
(tick one)

(Required)

Questions	Not at all important	Not particularly important	Quite important	Very important	Don't Know
WATER AVAILABILITY - Working with partners like our Local Planning Authorities, water companies, Water Resource East and farmers to find ways to improve the County's resilience to drought					
RESILIENT INFRASTRUCTURE - Working with the Combined Authority, Local Planning Authorities, Highways Agency and utility companies to ensure infrastructure can cope with climate change and changing behaviours (eg. EVs)					
GREEN & BLUE INFRASTRUCTURE - Working with our partners to create and improve green space and water to reduce climate change impacts - eg, reduce flooding, manage temperatures					
RESILIENT ECONOMY - supporting businesses and large asset-owners to integrate green finance approaches to improve their resilience to climate change					

How important do you think it is to implement each of our collaborative priority areas for NATURAL CAPITAL (tick one)?

(Required)

Questions	Not at all important	Not particularly important	Quite important	Very important	Don't Know
PEATLAND - Working with partners to conserve and re-wet peatland to maintain their diverse range for flora and fauna many of which are internationally recognised					
WORK WITH THE AGRICULTURAL SECTOR - Working with farmers to develop best routes to aid reductions in impacts from pesticides, herbicides and nitrogenous fertilisers on our land while ensuring that that crops are produced sustainably and profitably					
GREEN SPACE - Working with partners a doubling of the county's natural and green spaces by 2050 will "secure access to high quality natural green spaces within 300m of everyone's home					
AIR POLLUTION - Working with our city and district councils, Greater Cambridge Partnership and Combined Authority to switch to low emission and electric vehicles and buses and encourage greater levels of walking and cycling instead of car use					

Climate Change and Environment Strategy Consultation

Consult Cambridgeshire

Please return to: mlei@cambridgeshire.gov.uk by 31 January 2020

Do you have any comments on our collaborative priority areas?

Climate Change and Environment Strategy Consultation

Consult Cambridgeshire

Please return to: mlei@cambridgeshire.gov.uk by 31 January 2020

Our Targets

The strategy also contains 7 targets. These will be the key ways we measure how successful the strategy has been in reducing greenhouse gas emissions, improving resilience to Climate change and improving nature.

Our targets have been developed based upon our Carbon Footprint and reflect the ambitious programme of work outlined in the Action Plan.

What do you think of each of our targets?

(Required)

Questions	Too easy	Achievable	Too ambitious	Don't know
Reduce the Council's organisational net-carbon footprint from emissions that occur directly from sites or assets owned or controlled by the organisation ("scope 1 and 2") from 1979.28 tonnes per annum in 2018-19 by 50% by 2023				
All Council departments to implement measures to ensure their services are adapted to climate change in line with the National Adaptation Programme recommendations				
Deliver a 20% increase in biodiversity ("biodiversity net-gain") across all Council property, land projects and wildlife sites				
Reduce by 50.4% by 2030 the Council's emissions that occur due to delivery of our services using assets not owned or controlled by us ("scope 3")				
100% of Council strategies include policies that tackle Climate Change and natural capital enhancement by 2023				
Sign up to a shared target with partners and the community to deliver 50.4% greenhouse gas emissions reductions by 2030 in tonnes/CO2 per annum for Cambridgeshire based on 2018 baseline				
Deliver Government's net zero-carbon target for Cambridgeshire by 2050				
All buildings owned and occupied by the Council to be fossil fuel free and all the Council's car and van fleet will be electric by 2025				

Is there anything else that you would like to see the Council doing, or that we may have missed in our Climate Change and Environment Strategy?

Climate Change and Environment Strategy Consultation

Consult Cambridgeshire

Please return to: mlei@cambridgeshire.gov.uk by 31 January 2020

Do you have any organisational targets for reducing your environmental impact?

(Choose any one option) (Required)

☐ Yes

☐ No

If yes, Please tell us about your targets

Which of our targets align with any targets your organisation have set (if any)?

Are there any conflicts between our targets and yours?

Our Action Plan

Our action plan defines how we aim to reach the targets we have set. They are intended to be seen in addition to action plans held within other strategies, such as the council's Plastic Strategy. We would like to know your thoughts on our actions.

Are there any key actions that you think are missing?

Do any actions conflict with work you are undertaking? If so, please tell us which action(s) and how.

If you have your own strategy, does your organisation share any of the actions we have proposed, and are there opportunities for collaboration with the Council?

Is there anything here you would like to know more about or collaborate with as an organisation?

Thank you for taking part in Cambridgeshire County Council's consultation on our Draft Climate Change and Environment Strategy.

Wallis' Farm

KEY

EXTERNAL SITE BOUNDARY

ALLOTMENTS AND PARKING AREA
ADOPTION BY PARISH COUNCIL

PUBLIC OPEN SPACE
ADOPTION BY PARISH COUNCIL



Client:
Hill Residential Limited
The Courtyard, Abbey Barns,
Ickleton, CB10 1SX

Project:
Grace Crescent
Hardwick

Drawing:
Parish Transfer Plan

Scale: 1:500@A1	Date: August 2019	
Drawn By: JH	Checked By: GM	Rev. No: A
CAD Ref:	Drawing No: 095-TP-050	

THIS DRAWING IS A COPYRIGHT
All dimensions to be checked on site or in the workshop before work commences.
Only figured dimensions to be worked to. Any discrepancies to be reported to the Architect.

HARDWICK PARISH COUNCIL MONTHLY FINANCIAL STATEMENT

Jan-20

Summary of previous month**Balance brought forward****£367,033.31****Adjustments and amendments****Expenditure approved at last meeting/between meetings**

SALARIES		-544.40
RPM	PLAY REPAIRS	-414
LGS SERVICES	WEBHOSTING RENEWAL	-96
RH LANDSCAPES	GRASSCUTTING & TREES	-930
CCC	STREETLIGHT ENERGY	-2337.83
UNITY TRUST	SERVICE CHARGE	-18
SSE	STREETLIGHT ENERGY	-85.12
SSE	STREETLIGHT ENERGY	-82.75
ICO	DPA	-35

Misc credits

NS&I	INTEREST	27.35
LLOYDS	INTEREST	0.02
HMRC	VAT	13392.59
NS&I	INTEREST	26.47
LLOYDS	INTEREST	0.02
LLOYDS	FEES/COMPENSATION	3.42
HSSC	RENT	1000
NS&I	INTEREST	27.35
LLOYDS	INTEREST	0.02

*Total Adjustments*9934.14

Balance revised after adjustments

£376,967.45**Bank Reconciliation to last statement**

Account	Funds	Statement	Outstanding
Unity Trust Current Acc	252,785.92	254611.75	-1,825.83
Lloyds Current Account	0.00	0.00	
Lloyds Business Account	546.44	546.44	
Cambridge Counties Bank	95,635.09	95,635.09	
Bonds	28,000.00	28,000.00	
Total	376,967.45	378,793.28	-1,825.83

Expenditure for approval

£

SALARIES		594.90
TOWN AND COUNTRY	TREE WORKS	192.00
HARDWICK SCHOOL	ROOM HIRE	114.37
LGS SERVICES	ADMIN SUPPORT	1347.80
LGS SERVICES	ADMIN SUPPORT	1315.53

*Total expenditure*3564.60

Balance c/f

£373,402.85**Notes:***Late invoices will be brought to the meeting*

THE LLOYDS CURRENT ACCOUNT HAS BEEN CLOSED AND ALL FUNDS AND DD'S TRANSFERRED TO THE NEW UNITY TRUST ACCOUNT.